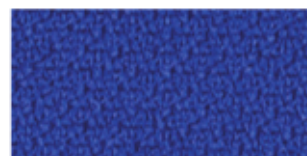


STEP™

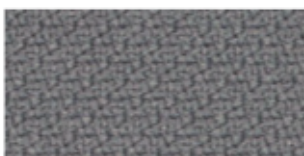
by Gabriel



64013



65018







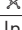


60011



60999

STEP™

Design no.	2440	
Fields of application	contract	
Material	Trevira CS	100%
Weight	470 g/lm · (15.16 oz/lin.yd.)	
Width	140 cm · (55")	
Abrasion resistance	rubs · EN ISO 12947-2 (Martindale)	100,000
Pilling	EN ISO 12945-2	4-5
Colour fastness to light	scale 1-8, max 8 · EN ISO 105 - B02	5-7
Colour fastness to rubbing	scale 1-5, max 5 · EN ISO 105x12 (wet/dry)	4-5
Maintenance	 skrinkage: max. 5%	P(W)
Flammability:	EN 1021 1&2 · BS 5852 0&1 · BS 5852 Crib 5 · DIN 4102-B1 · CAL 117-E · FAR/JAR 25.853 (a) (i) (ii) · Önorm B3825 B1-Q1 · NFP92-503-M1 · CA TB 117-2013 · BS 7176 Medium hazard · AM 18 - NF D 60-013 · IMO MSC 307 (88) Annex 1 part 8/MED Certificate IMO · UNI 9175 Class 1 EMME. Will also pass other flammability standards. Flame retardant performance is dependent upon the foam used.	
US ACT	<ul style="list-style-type: none">  AATCC 16 Light fastness  AATCC 8 or 116 wet/dry crocking  California Bulletin CAL 117-E Class 1  CA TB 117-2013  ASTM D4157-02 Wyz Abrasion (Heavy Duty Upholstery)  ASTM D3511 Pilling 	<ul style="list-style-type: none"> pass pass pass pass pass pass
Design/Colours	Inger Mosholt Nielsen / Dorthe Helm	
Subject to changes and colour differences		

